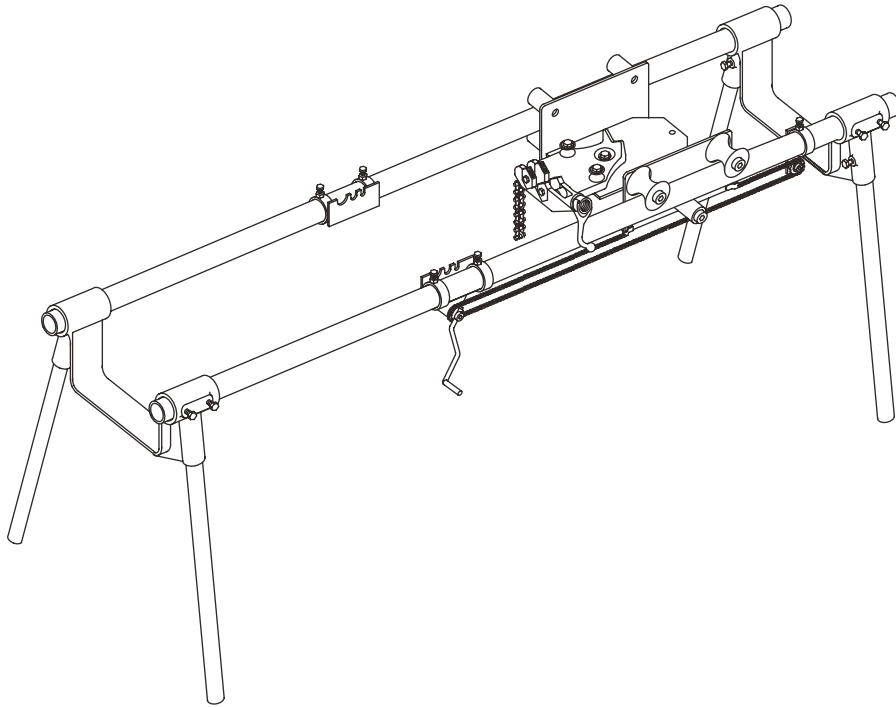




Current Tools

FOR THE PROFESSIONAL ELECTRICIAN

**Current Tools™ Model 280 Bending Table
for use with Greenlee® Model 885, 884, 880, and 777
and Ensley® Model E-125 Conduit Benders ***



Assembly, Operating, Safety and Parts Manual

07/09 REV. 2



Read and understand this material before assembling or operating the 280 Bending Table. Failure to understand how to safely assemble and operate this equipment may result in serious injury or death.



Read and understand the bender manufacturer's operating and safety instructions before attaching to or operating with the 280 Bending Table. Failure to do so may result in serious injury or death.

These manuals are free of charge. All personnel who assemble or operate this equipment should have a copy of these manuals and read and understand their contents. To request a copy, call or write to the address below.

**CURRENTTOOLS • P. O. BOX 17026 GREENVILLE, SC 29606
800.230.5421 or 864.244.1201 • FAX 864.244.5860**

www.currenttools.com

* Greenlee® is a registered trademark of Greenlee/Textron and Ensley® is a registered trademark of Rothenberger Group, which have no affiliation with Current Tools.



TABLE OF CONTENTS — 280 Bending Table

Safety Information	2
Components	3
Assembly Instructions	3 - 5
Bender Mounting Procedure	6 - 9
Exploded View	10
Parts List	11

RETAIN SAFETY INFORMATION



This manual should be read and understood by all personnel who assemble or operate this Bending Table. Failure to understand how to safely assemble and operate this unit could result in serious injury or death. This Bending Table should only be operated by qualified personnel.

WARNING

This unit is intended to be used with Greenlee® Model 884, 885, 777, 880 and Ensley® E-125 conduit benders.

Read and understand the bender manufacturer's operating and safety instructions before attaching to or operating with the 280 Bending Table. Failure to do so may result in serious injury or death.



IMPORTANT SAFETY INFORMATION

Follow ALL safety information provided by the bender manufacturer.

- DO NOT operate in wet or damp locations. DO NOT expose to rain.
- DO NOT operate in an explosive atmosphere.
- ALWAYS set-up bending table on a firm, level surface.
- Keep all body parts, hair, loose clothing, etc. away from rotating parts and pinch points.
- ALWAYS wear eye protection.
- DO NOT alter the bending table.

WARNING

Never allow the carriage with vise to contact the bender, hand crank unit, rest plate or any other component of the bending table during a bend.

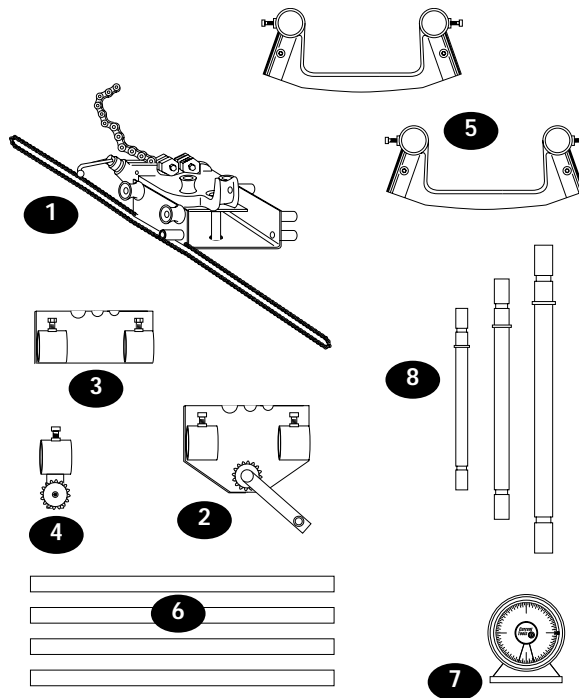
- All pins, clips, bolts, etc. should be engaged and rechecked before any bending has begun.
- When using an electric pump, be sure to unplug pump before servicing and when not in use. Also, inspect hoses and power cords before use.
- Only the operator should be in the work area.
- Keep the work area clean.

* Greenlee® is a registered trademark of Greenlee/Textron and Ensley® is a registered trademark of Rothenberger Group, which have no affiliation with Current Tools.

COMPONENTS — 280 Bending Table

For use with Greenlee® No. 885, 884, 880, 777 and Ensley® No. E-125 conduit benders

KEY	NO.	DESCRIPTION	QUANTITY
1	280-1	Carriage with vise	1
2	280-2	Hand crank unit	1
3	280-3	Rest plate	1
4	280-4	Idler unit	1
5	280-5	Leg support	2
6	280-6	Legs	4
7	280-7	Magnetic protractor	1
8	280-8	Support pin (1-1/2" is standard)	2
	280-9	Chain Extension Kit (not shown)	1
	104	Storage box (not shown)	1



NOTE: 2 each 10' lengths of 2" rigid conduit used as the table supports are to be supplied by the user.

ASSEMBLY INSTRUCTIONS

Insert two of the legs into the leg support as shown in *figure 1* and tighten the bolts to hold the legs in place. Repeat for second leg support.

Place the ends of the two 10' pieces of 2" rigid conduit (*supplied by the user*) into one leg support assembly and tighten the two bolts on each side. See *figure 1*.

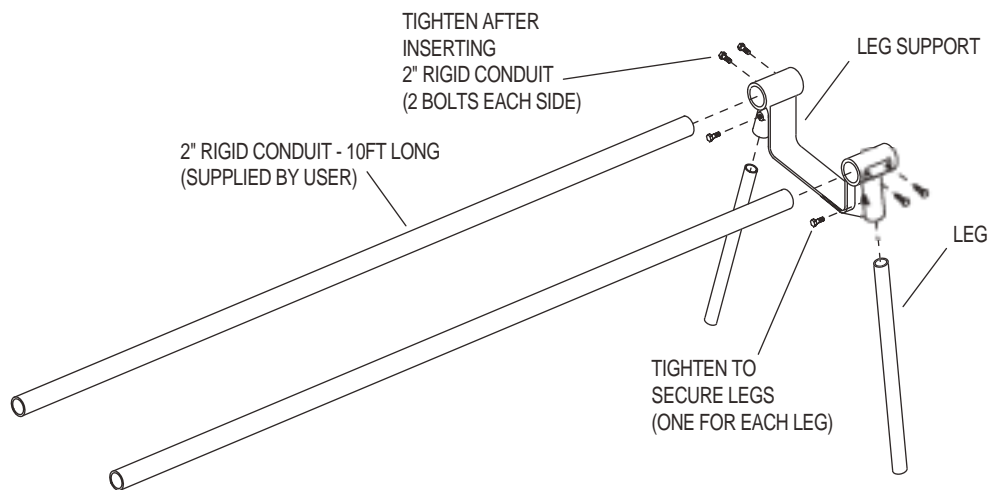


FIGURE 1

* Greenlee® is a registered trademark of Greenlee/Textron and Ensley® is a registered trademark of Rothenberger Group, which have no affiliation with Current Tools.

continued on next 2 pages . . .



ASSEMBLY INSTRUCTIONS continued . . .

Standing at the open end of the table, place the idler unit on the right conduit. Slide the idler unit to the far end of the conduit and temporarily tighten the bolt. See figure 2.

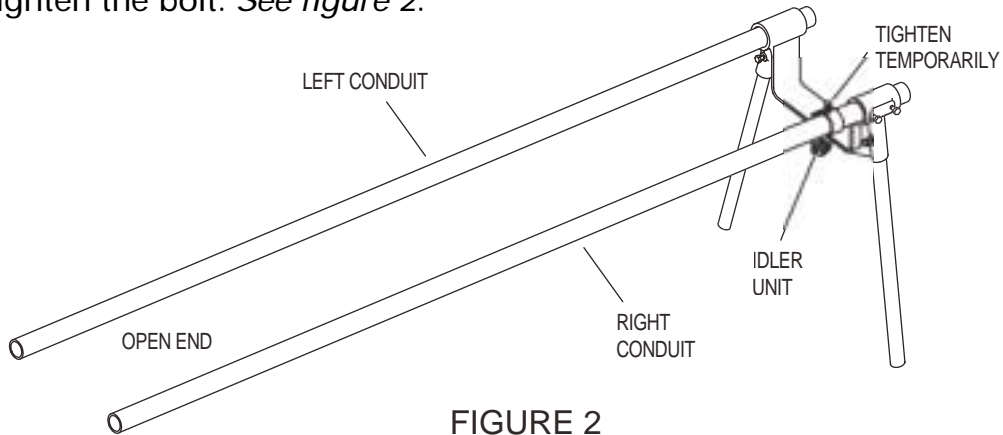


FIGURE 2

Next, slide the carriage with vise onto the 2 pieces of conduit as shown. The vise handle should be on the same side as the idler unit. Push the carriage with vise to the middle of the table. See figure 3.

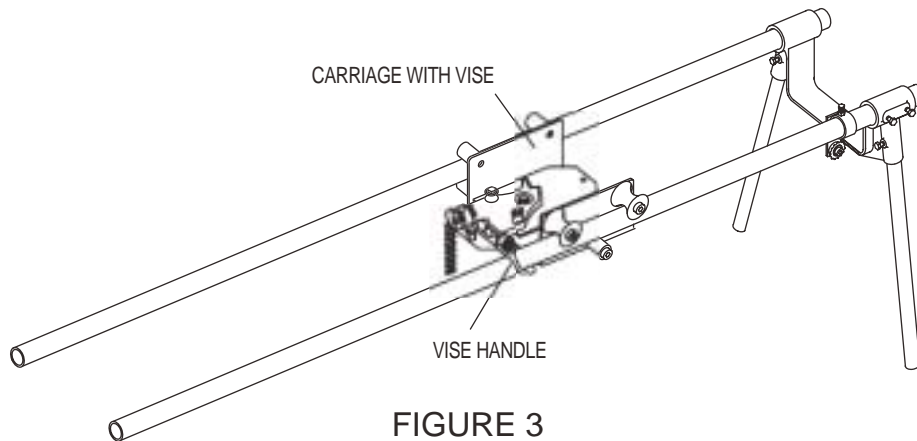


FIGURE 3

Next, place the hand crank unit on the same right conduit (right) as the idler unit and temporarily tighten the bolts. See figure 4.

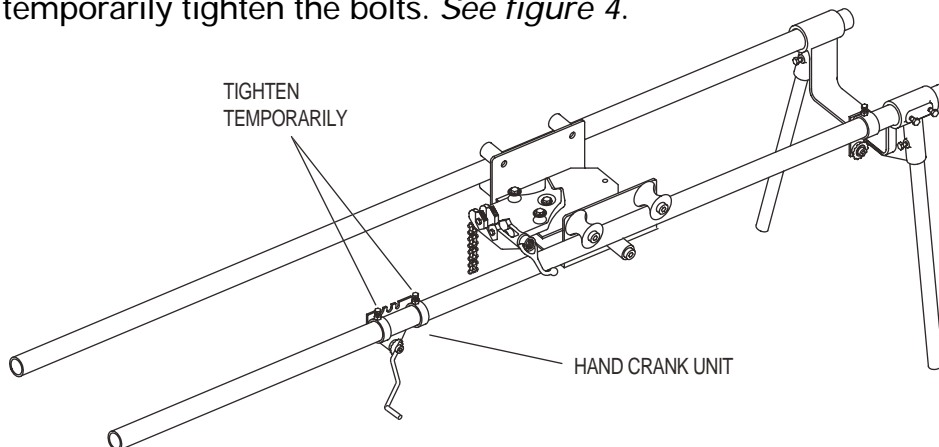


FIGURE 4

continued on next page . . .



ASSEMBLY INSTRUCTIONS continued . . .

Next, slide the rest plate on left side conduit and position directly across from the hand crank unit and temporarily tighten the bolts. See figure 5.

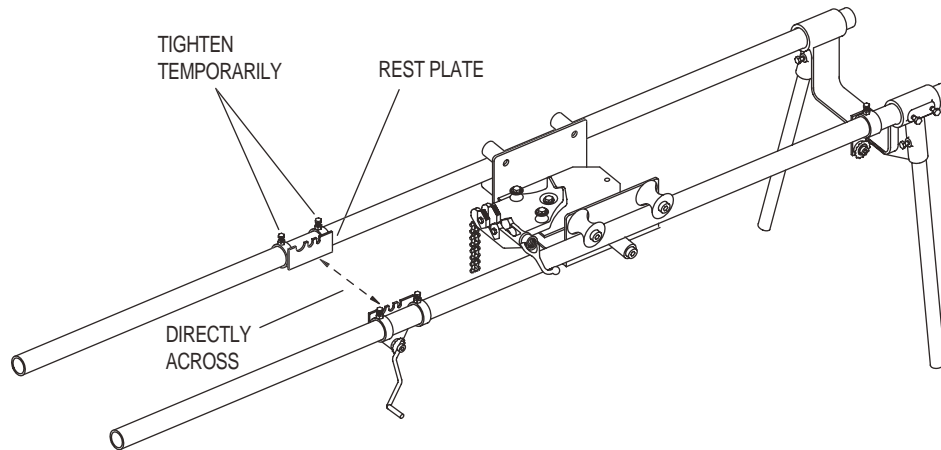


FIGURE 5

Insert the two 10' lengths of 2" rigid conduit into the remaining leg support assembly as shown and tighten the four bolts against the conduit. See figure 6.

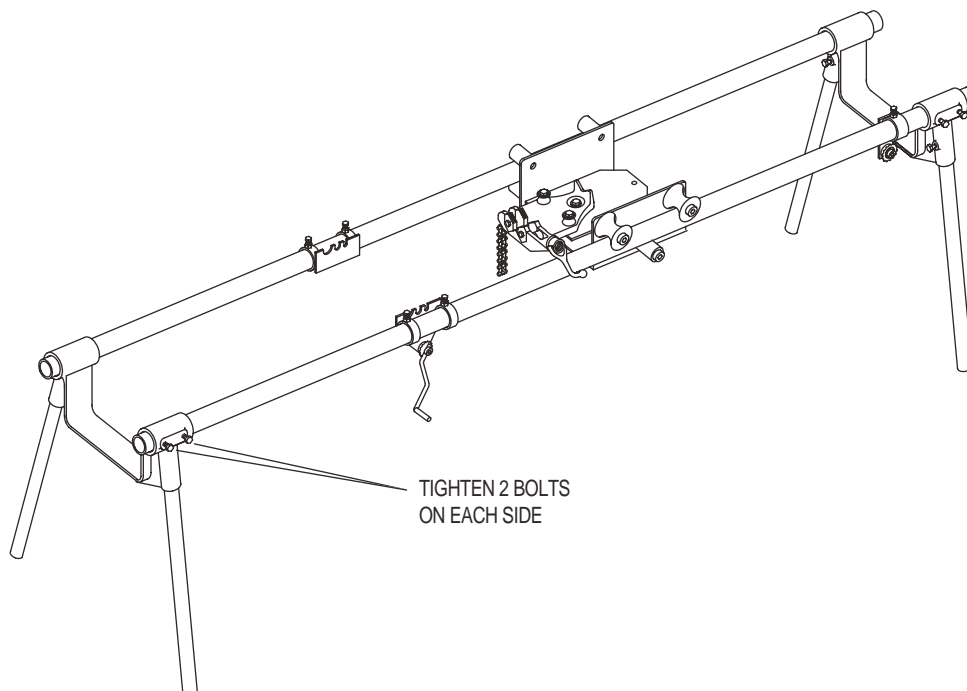


FIGURE 6



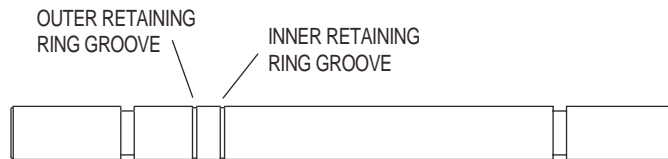
BENDER MOUNTING PROCEDURE

1. Determine the correct size support pins for the bender you are using:

Bender Model #	Support Pin Size
Greenlee® 880	- 3/4" diameter pins
Greenlee® 777	- 1" diameter pins
Greenlee® 884, 885	- 1 1/2" diameter pins
Ensley® E - 125	- 1 1/2" diameter pins

The 280 Bending Table comes standard with the 1 1/2" diameter pins.

NOTE: The support pins for the 884 and 885 Benders have 2 retaining ring grooves. Place the retaining ring in the outer groove when using the 885 Bender and place the retaining ring in the inner groove when using the 884 Bender. See figure below.



2. Place support pins into the bender frame holes that match the size conduit to be bent. (Note: Be sure the ram scale is on the hand crank unit side of the bending table.)
3. Lift bender and set on table as shown with one (front) support pin about 1" from leg support. See figure 7. Next, move the hand crank unit and the rest plate so that the rear support pin sits in the matching slot of the hand crank unit and the rest plate. The wide groove on each side of the support pin should "sit" in the rest plate and the hand crank unit. See figure 7. Tighten all bolts on the hand crank unit and the rest plate.
4. Place chain around sprocket on hand crank unit and around idler unit as shown. See figure 8. Adjust idler unit to tighten chain. Tighten bolt on idler unit.

NOTE: Before bending, check to ensure all bolts are tightened and the bending table is level.

5. The Bending Table is now set-up for bending radii up to 36".

NOTE: When bending 36" and larger radii and to bend 3" and smaller conduit with the Greenlee® 884 and 885 benders, the chain extension kit (Current Tools part # 280-9) is required.

⚠ WARNING ⚠

Never allow the carriage with vise to contact the bender, hand crank unit, rest plate or any other component of the bending table during a bend.

* Greenlee® is a registered trademark of Greenlee/Textron and Ensley® is a registered trademark of Rothenberger Group, which have no affiliation with Current Tools.

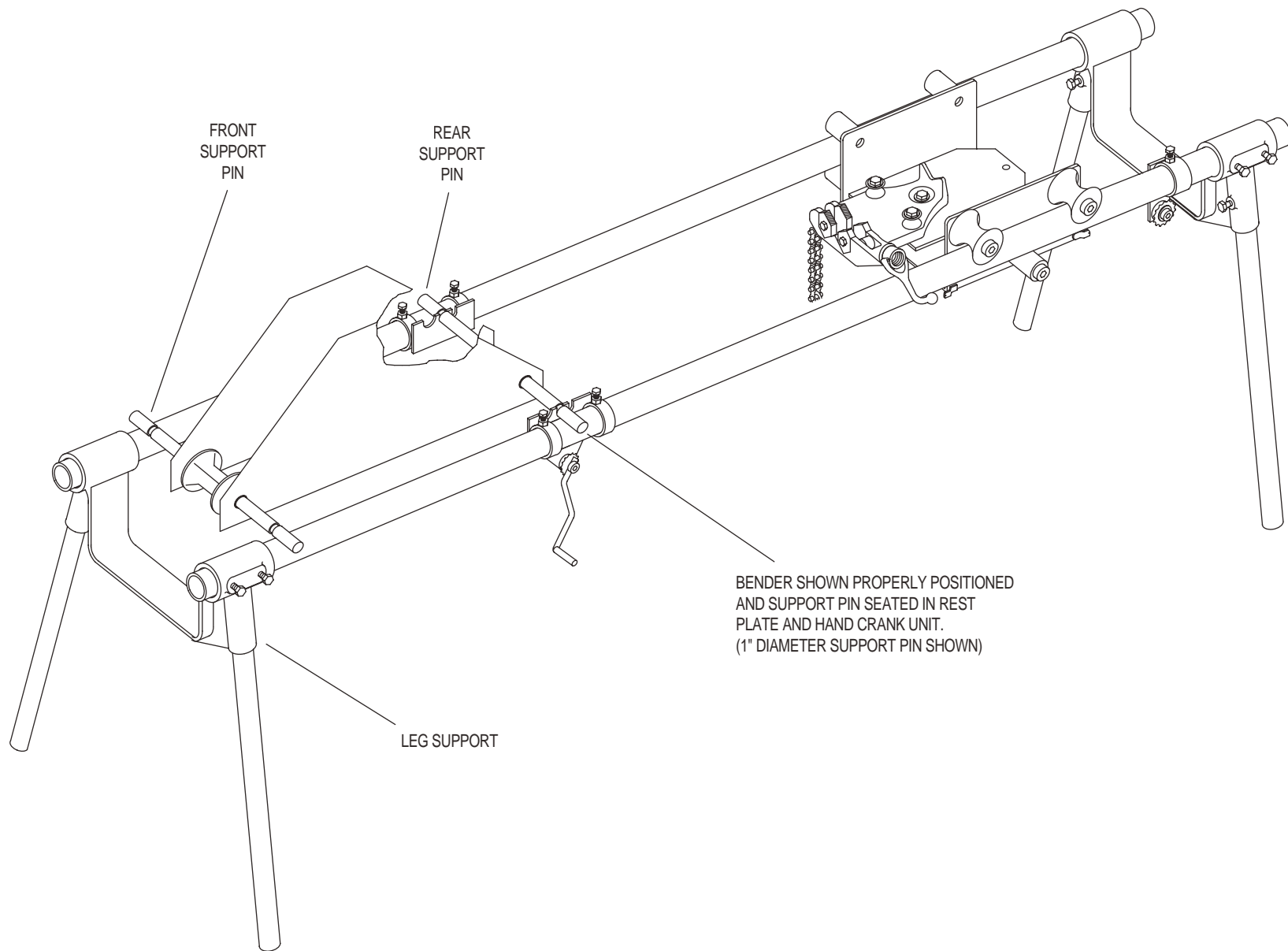


FIGURE 7

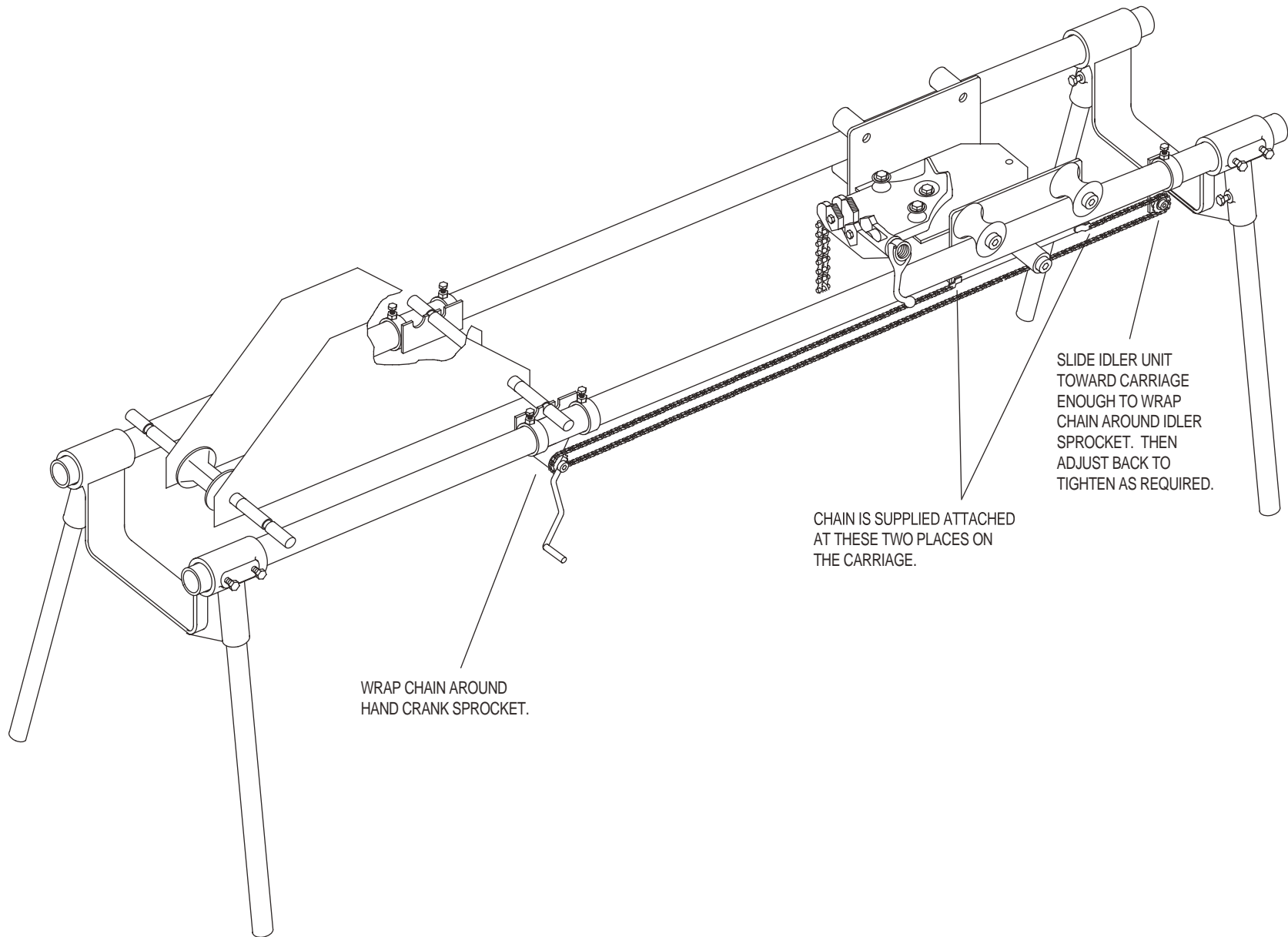
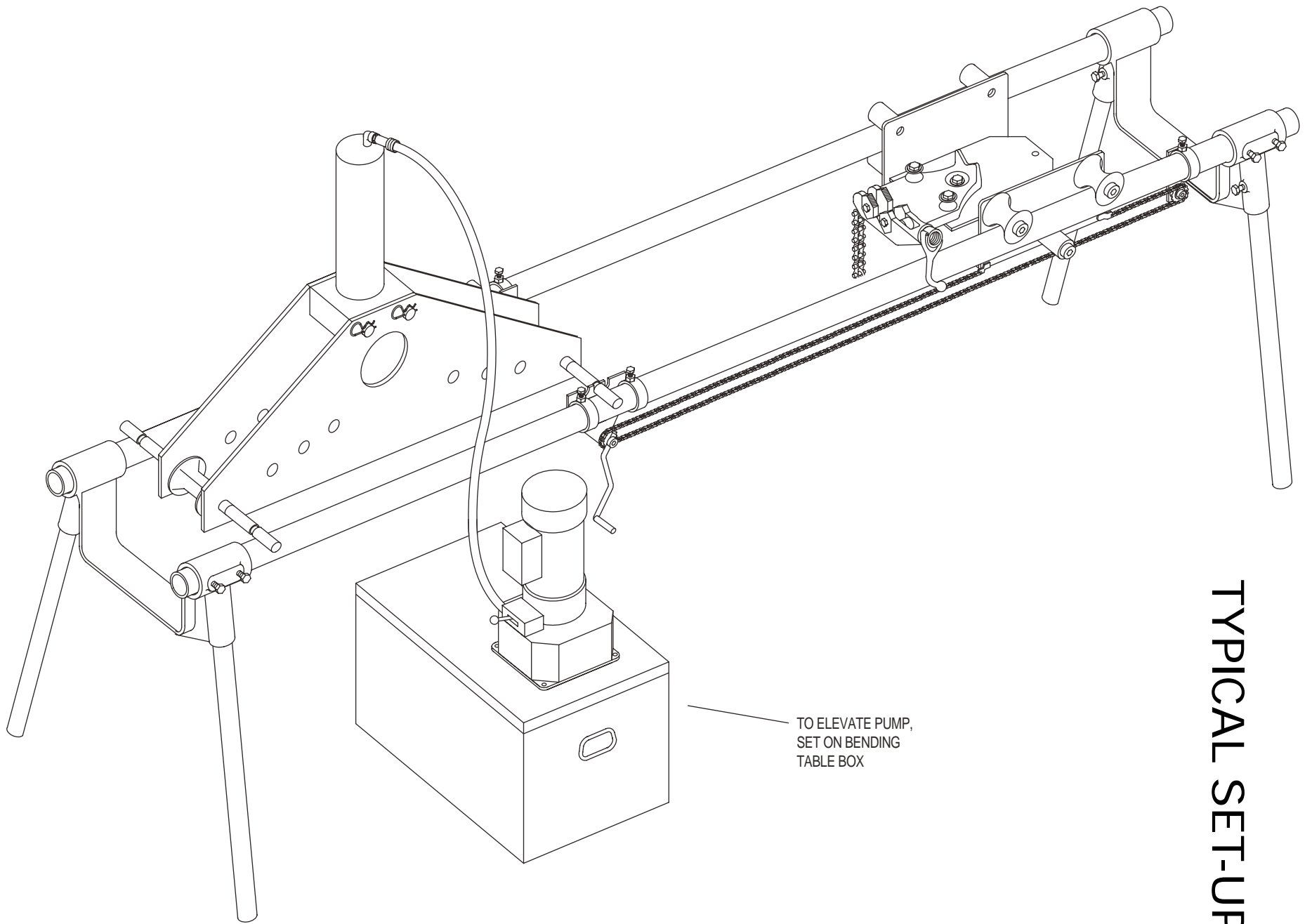


FIGURE 8



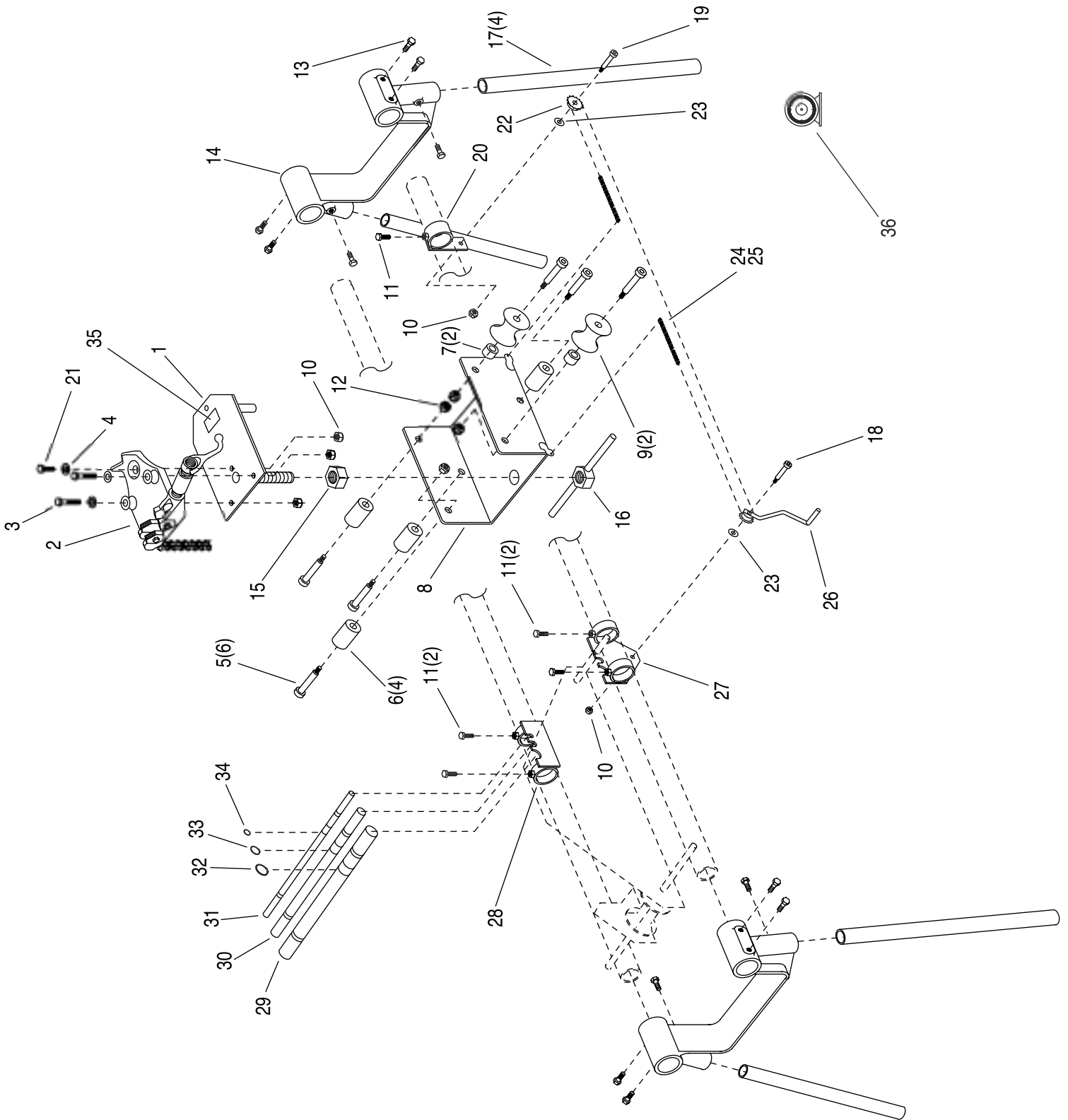
TO ELEVATE PUMP,
SET ON BENDING
TABLE BOX

TYPICAL SET-UP

FIGURE 10

EXPLODED VIEW

280 BENDING TABLE





PARTS LIST — 280 Bending Table

<u>ITEM#</u>	<u>PART#</u>	<u>QTY</u>	<u>DESCRIPTION</u>
1.....	280-1C1.....	1.....VISE PLATE LESS VISE
2.....	280-1-1.....	1.....VISE UNIT
3.....	281-1E.....	2.....1/2-13 X 3 HEX HEAD BOLT
4.....	451-25.....	3.....1/2 USS FLAT WASHER
5.....	281-1D.....	6.....3/4 X 2 3/4 SOCKET HEAD CAP SCR
6.....	280-1B.....	4.....FLAT ROLLER
7.....	280-2E.....	2.....SPACER
8.....	280-1C.....	1.....CARRIAGE UNIT
9.....	280-1A.....	2.....CUPPED ROLLER
10.....	281-1J.....	5.....NYLON INSERT LOCK NUT
11.....	8092-2.....	5.....1/2-13 X 1" HEX CAP SCREW (GR5)
12.....	281-1I.....	6.....5/8-11 THIN NYL. INS. LOCK NUT
13.....	77-025.....	12.....1/2-13 X 1 1/4" HEX CAP SCREW (GR5)
14.....	280-5.....	2.....LEG SUPPORT
15.....	670-3.....	1.....NUT-ACME, 1-3/8-4
16.....	280-1C2.....	1.....VISE ADJUSTING NUT W/ HANDLE
17.....	280-6.....	4.....SUPPORT LEGS
18.....	280-2C2.....	1.....5/8 X1 1/4 SOCKET HD CAP SCREW
19.....	280-2B1.....	1.....5/8 X1 SOCKET HD CAP SCREW
20.....	280-4.....	1.....IDLER BRACKET
21.....	281-1F.....	1.....1/2-13 X 1 1/2 HEX CAP SCREW
22.....	280-2B.....	1.....#35 SPROCKET
23.....	77-017.....	2.....3/4 SAE FLAT WASHER
24.....	280-1D.....	1.....#35 CHAIN SECTION - 10'
25.....	280-1F.....	2.....#35 CHAIN LINK
26.....	280-2C.....	1.....HAND CRANK HANDLE
27.....	280-2.....	1.....HAND CRANK BRACKET
28.....	280-3.....	1.....REST PLATE
29.....	280-8.....	2.....1 1/2" DIA. SUPPORT PIN
30.....	280-8-1.....	2 - <i>optional</i>1" DIA. SUPPORT PIN
31.....	280-8-2.....	2 - <i>optional</i>3/4" DIA. SUPPORT PIN
32.....	280-8B.....	2.....HEAVY DUTY RET. RING
33.....	280-8-1A.....	2 - <i>optional</i>HEAVY DUTY RET. RING
34.....	280-8-2A.....	2 - <i>optional</i>HEAVY DUTY RET. RING
35.....	280-1G.....	1.....DECAL-280
36.....	280-7.....	1.....PROTRACTOR
37.....	280-9.....	1 - <i>optional</i>CHAIN EXTENSION KIT (<i>not shown</i>)
38.....	104.....	1.....STORAGE BOX (<i>not shown</i>)
39.....	BX-1A.....	1.....DECAL BOX-280