



PULLING ACCESSORIES

Pulling Grips — 00682 Series

TRIPLE WEAVE – ROTARY HEAD – SHOULDERS

These grips offer a Stainless Steel Rotary Head with Shoulders and Triple Weave galvanized wire construction. The shoulders help to protect the leading edge of the cable and this type should be used for heavy duty applications.



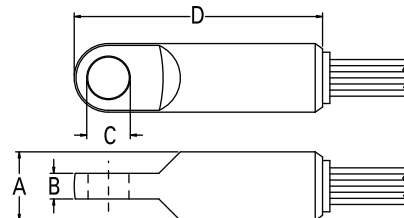
Note: The Rotating Head does not replace the use of a Line Swivel, Series 00505. There are no bearings to allow rotation under load and severe damage may occur to the cable being installed if this product is used without the correct swivel.

Catalog Number	Size Range	Mesh Length	A	B	C	D	Approx. Breaking Strength	Weight
00682-006	0.25" to 0.49"	28"	7/8"	5/16"	1/2"	2 3/4"	6,500 lbs.	1.5 lbs.
00682-012	0.50" to 0.74"	33"	1"	1/2"	9/16"	3 7/8"	10,400 lbs.	1.9 lbs.
00682-019	0.75" to 0.99"	41"	1"	1/2"	9/16"	3 7/8"	16,000 lbs.	3.2 lbs.
00682-025	1.00" to 1.24"	51"	1 3/8"	1/2"	11/16"	5 3/8"	25,400 lbs.	5.1 lbs.
00682-032	1.25" to 1.49"	60"	1 5/8"	9/16"	7/8"	6 1/8"	31,700 lbs.	6.0 lbs.
00682-038	1.50" to 1.99"	70"	1 7/8"	11/16"	1"	7 1/4"	32,000 lbs.	6.5 lbs.
00682-048	2.00" to 2.49"	75"	1 7/8"	11/16"	1"	7 1/4"	44,600 lbs.	6.7 lbs.

Pulling Grips — 00690 Series

DOUBLE WEAVE – ROTARY HEAD – SHOULDERS

These grips offer a Rotating Eye with Shoulders and Double Weave galvanized wire construction. The shoulders help to protect the leading edge of the cable and this type should be used for heavy duty applications.



Note: The Rotating Head does not replace the use of a Line Swivel. There are no bearings to allow rotation under load and severe damage may occur to the cable being installed if this product is used without the correct swivel.

Catalog Number	Size Range	Mesh Length	A	B	C	D	Approx. Breaking Strength	Weight
00690-038	0.50" to 0.74"	16"	7/8"	5/16"	1/2"	2 3/4"	5,800 lbs.	1.5 lbs.
00690-050	0.75" to 1.12"	24"	7/8"	5/16"	1/2"	2 3/4"	6,700 lbs.	1.6 lbs.
00690-100	1.13" to 1.49"	33"	1 3/8"	1/2"	11/16"	5 3/8"	13,000 lbs.	1.9 lbs.
00690-125	1.50" to 1.99"	36"	1 3/8"	1/2"	11/16"	5 3/8"	16,500 lbs.	2.3 lbs.
00690-200	2.00" to 2.49"	36"	1 5/8"	9/16"	7/8"	6 1/8"	27,000 lbs.	3.8 lbs.
00690-250	2.50" to 2.99"	38"	1 7/8"	11/16"	1"	7 1/4"	33,000 lbs.	5.0 lbs.
00690-300	3.00" to 3.74"	39"	1 7/8"	11/16"	1"	7 1/4"	41,000 lbs.	5.2 lbs.
00690-350	3.75" to 4.24"	42"	1-7/8"	11/16"	1"	7 1/4"	48,000 lbs.	9.2 lbs.
00690-400	4.25" to 4.99"	58"	1-7/8"	11/16"	1"	7 1/4"	48,000 lbs.	9.9 lbs.

Always read Breaking Strength, safety and technical data information.



Current Tools
FOR THE PROFESSIONAL ELECTRICIAN

www.currenttools.com

P.O. Box 17026 • Greenville, SC 29606 • 864.244.1201 • fax 864.244.5860 • 800.230.5421