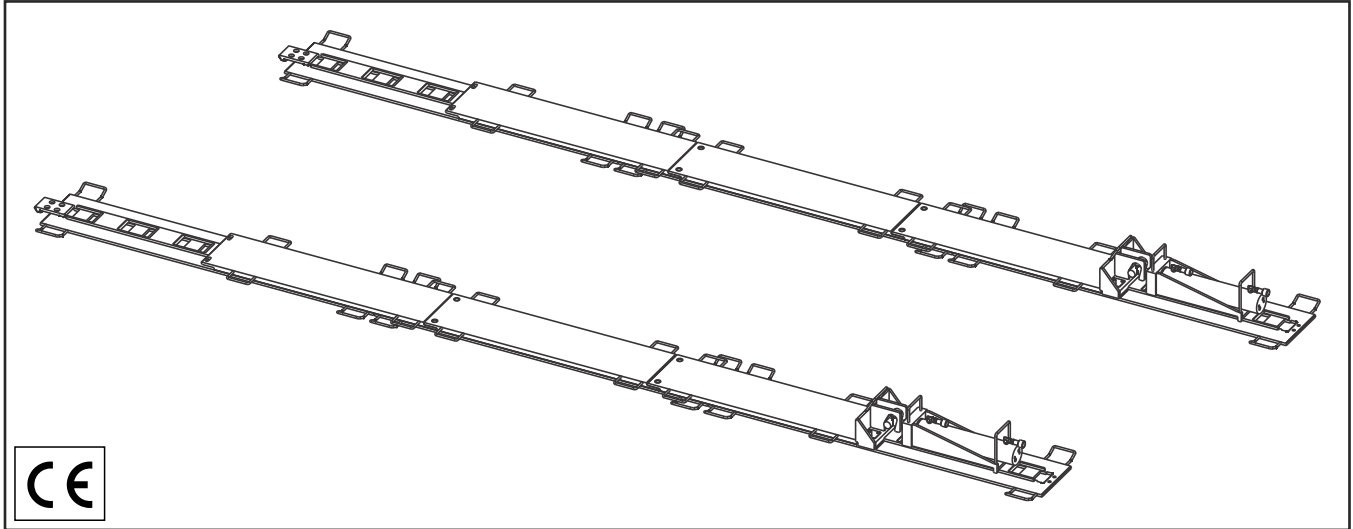


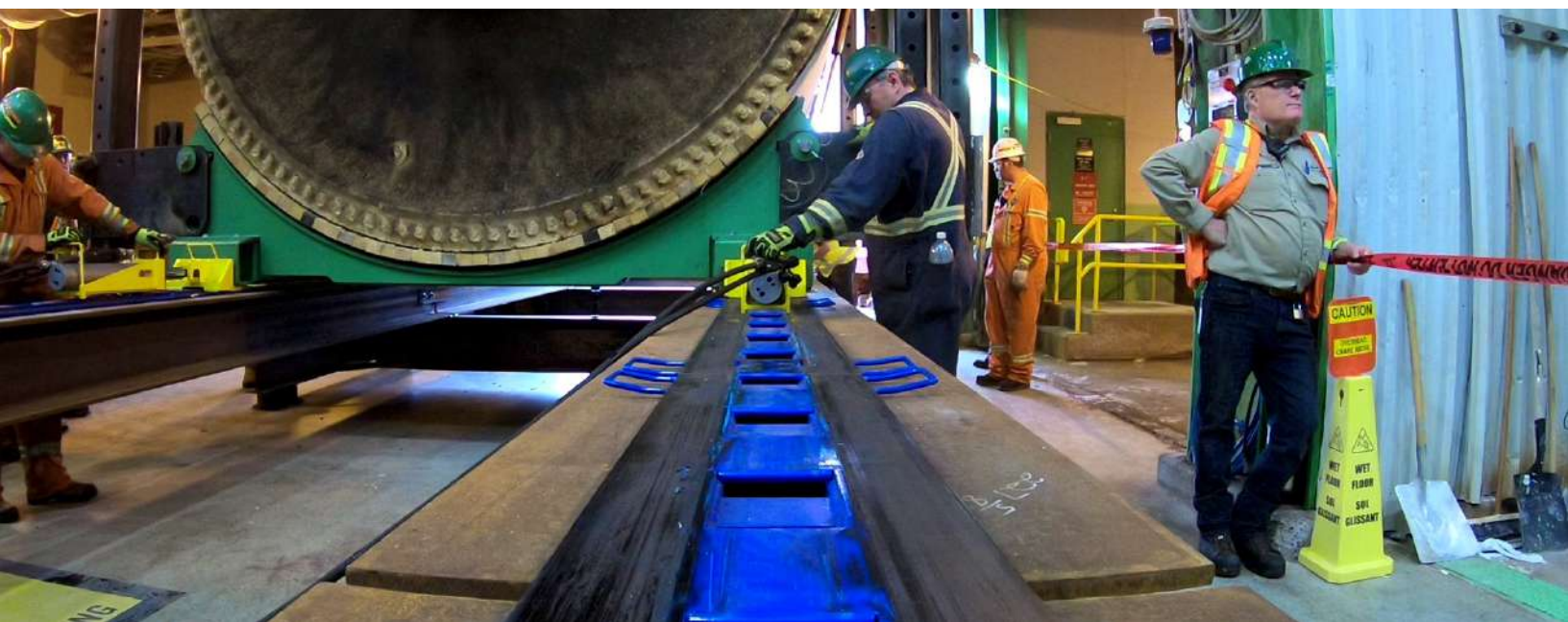
# LP350

## LOW PROFILE SKIDDING SYSTEM



The LP350 is our workhorse low-profile skidding system. Engineered for function and convenience, the LP350 has a durable graphite slide surface and a working height of 1.5" (38mm).

- Capable of pushing loads up to 350 tons (381 tonnes)
- Quick & simple track connections
- Durable graphite slide surface
- Cylinders automatically reset
- Stamped, engineered assembly drawings provided



# LP350

## LOW PROFILE SKIDDING SYSTEM



### LP350 Specifications

Skidding Push Capacity*	<b>350 ton</b> 318 tonne
Skidding System Height	<b>1.5"</b> 38 mm
Cylinder Capacity	<b>30 ton</b> 27 tonne
Cylinder Push/Pull Stroke	<b>14.25"</b> 362 mm
Cylinder Hydraulic Couplers	Enerpac CR400 (female)
Skidding Speed**	<b>90 ft/hr</b> 28 m/hr
System Coefficient of Friction	<b>15-20%</b>
Slide Surface Material	Graphite
Maximum Slope	<b>+/- 2%</b>
Track Alignment Tolerance	<b>+/- 0.25"</b> +/- 6 mm
Maximum Operating Pressure	<b>10,000 psi</b> 700 bar

\*Based on standard system with (2) push cylinders

\*\*Determined using Hydra-Pac 20-2-4D



*Full system is stored in a compact steel box for convenience & easy transportation*



LP350 Dimensions	Length	Width	Height	Weight
Track Section	<b>72"</b> 1.83 m	<b>19"</b> 480 mm	<b>1"</b> 25 mm	<b>120 lb</b> 54 kg
Slider Plate	<b>48"</b> 1.22 m	<b>19"</b> 480 mm	<b>1"</b> 25 mm	<b>125 lb</b> 56 kg
Cylinder Assembly	<b>27"</b> 690 mm	<b>6.5"</b> 170 mm	<b>9"</b> 230 mm	<b>100 lb</b> 45 kg
Full System in Storage Box	<b>76"</b> 1.93 m	<b>48"</b> 1.22 m	<b>31"</b> 790 mm	<b>3750 lb</b> 1700 kg



# LP350 LOW PROFILE SKIDDING SYSTEM

## A GOOD FIT

The LP350 represents the continued evolution of the low-profile range that also includes the XLP150 extreme low profile system.

In contrast to their heavy track counterparts, these products are completely hand-portable, compact and ideal for use in areas with limited access or clearance.

“

*We were very pleased with the [Hydra-Slide] system. We have a history stretching back 50 years—principally in Sweden but around the world too—and a hallmark of the company has always been innovation and development of our equipment fleet. The LP350 fits with that overarching theme.”*

*-Joakim Andersson, Jinert*

Credit: Sven Jinert AB, Hässleholm, Sweden 2020