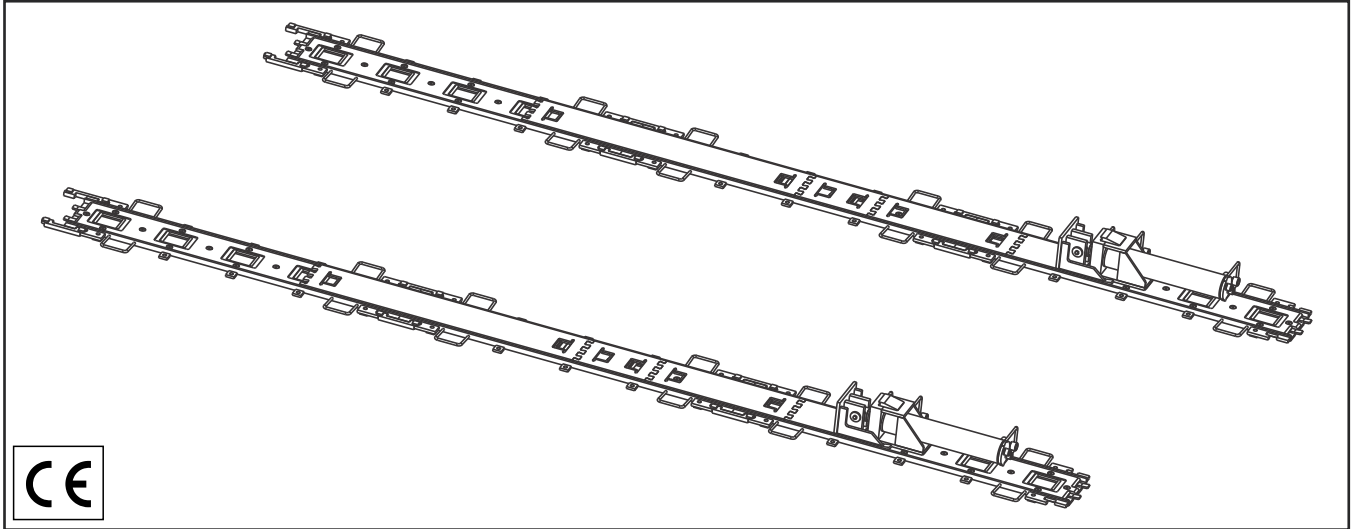


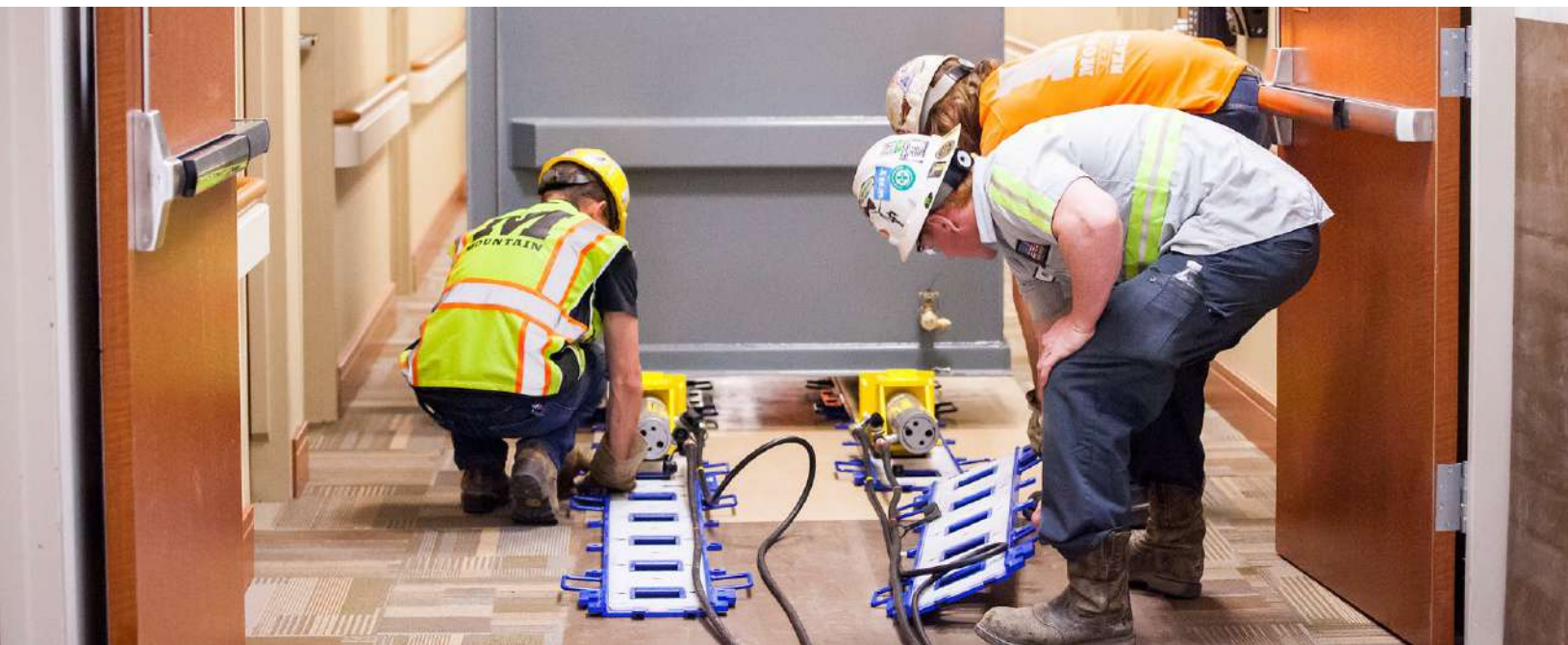
XLP150

EXTREME LOW PROFILE SKIDDING SYSTEM



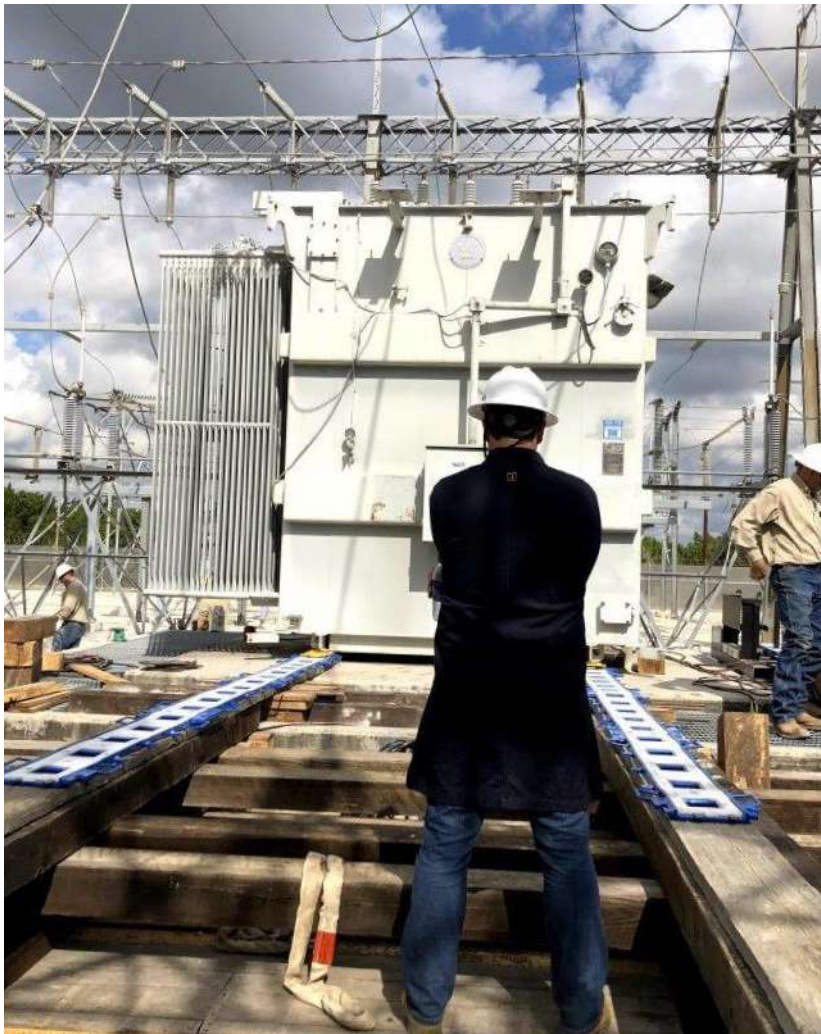
The XLP150 features a 1.25" (32mm) profile, is completely hand-portable, requires limited jacking, and can push or pull up to 150 tons (135 tonnes). It's quote simply one of the most versatile skidding systems we've ever designed.

- Simple switch from push to pull mode
- Ideal for limited clearance/access
- Low-maintenance steel-UHMW slide surface
- Cylinders automatically reset
- Stamped, engineered assembly drawings provided



XLP150

EXTREME LOW PROFILE SKIDDING SYSTEM



XLP150 Specifications

Skidding Push Capacity*	250 ton 227 tonne
Skidding Pull Capacity*	150 ton 136 tonne
Skidding System Height	1.25" 32 mm
Cylinder Capacity - Push	30 ton 27 tonne
Cylinder Capacity - Pull	12.5 ton 11.5 tonne
Cylinder Push/Pull Stroke	14.25" 362 mm
Cylinder Hydraulic Couplers	Enerpac CR400 (female)
Skidding Speed**	90 ft/hr 28 m/hr
System Coefficient of Friction	10-15%
Slide Surface Material	UHMW Polyethylene
Maximum Slope	+/- 2%
Track Alignment Tolerance	+/- 0.25" +/- 6 mm
Maximum Operating Pressure	10,000 psi 700 bar

*Based on standard system with (2) cylinders

**Determined using Hydra-Pac 20-2-4D

XLP150 Dimensions	Length	Width	Height	Weight
Track Section	60" 1.52 m	15.25" 390 mm	1.125" 29 mm	65 lb 29 kg
Slider Plate - 1'	12" 300 mm	7.75" 200 mm	0.375" 10 mm	7.5 lb 3.4 kg
Slider Plate - 2'	24" 610 mm	7.75" 200 mm	0.375" 10 mm	17.5 lb 7.9 kg
Slider Plate - 4'	48" 1.22 m	7.75" 200 mm	0.375" 10 mm	40 lb 18 kg
Cylinder Assembly	26" 660 mm	7.75" 200 mm	8" 205 mm	80 lb 36 kg
Full System in Storage Box	76" 1.93 m	48" 1.22 m	31" 790 mm	2090 lb 948 kg



Full system is stored in a compact steel box for convenience & easy transportation



XLP150 EXTREME LOW PROFILE SKIDDING SYSTEM

“

The XLP150 presented a myriad of safety and productivity advantages.”

-Bill Watts, Edwards Moving & Rigging

PROJECT

Edwards Moving & Rigging used their XLP150 skidding system to remove and replace small transformers inside a high-security power plant in the southeastern US.

The work site presented numerous challenges - low headroom, a confined workspace, and no forklift access - making the hand-portable and compact XLP150 an ideal solution.